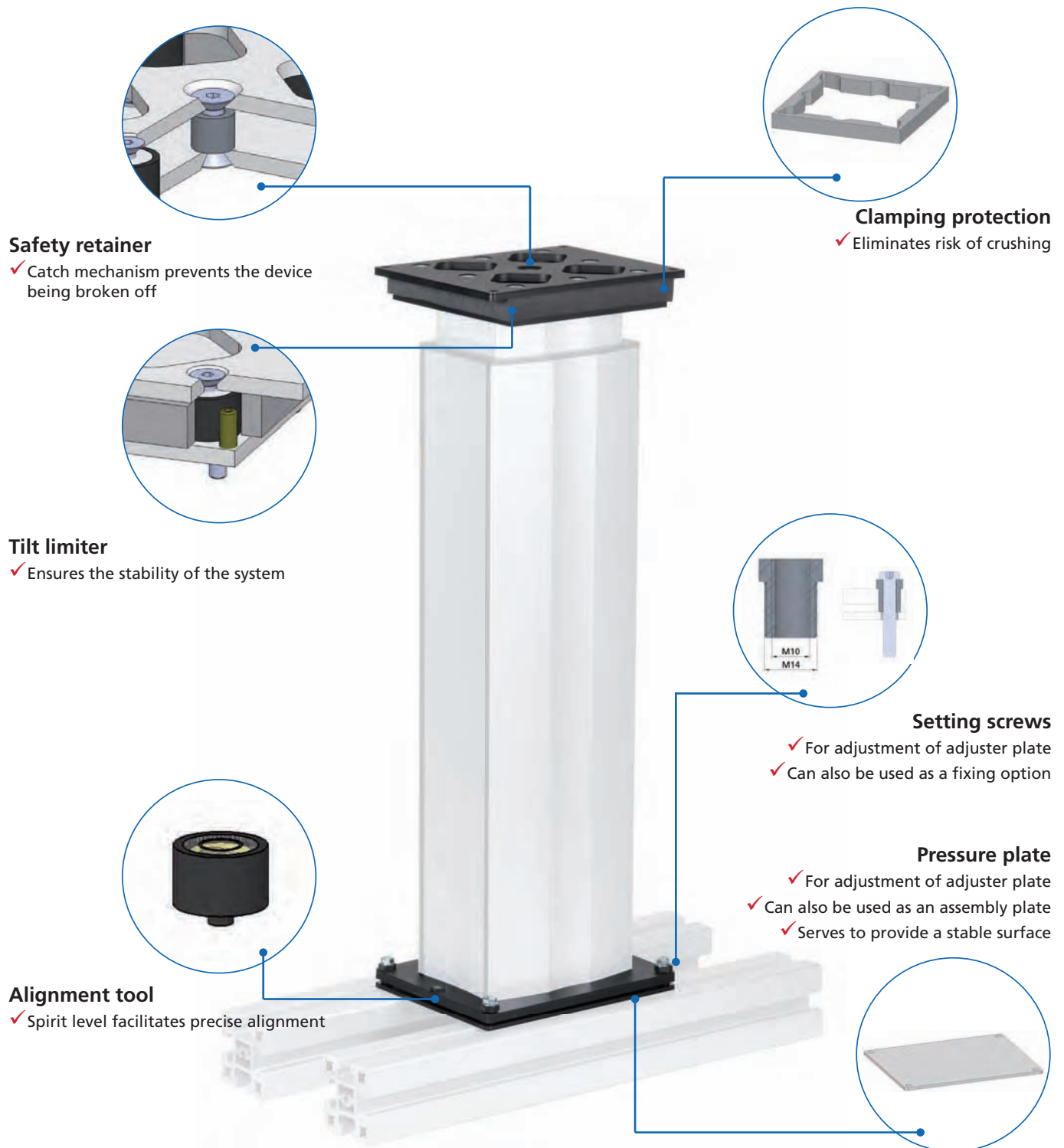


Balancing synchronous lifting systems

RK SyncFlex

RK SyncFlex – adjuster plates for lifting columns



Highlights / features:

- Alignment of the lifting columns via easily accessible setting screws
- Screws for connection to the lifting column are included in the set
- Alignment tool (spirit level)
- Height compensation for lifting columns
- Catch mechanism to prevent the device being broken off when mounted overhead
- Height compensation $\pm 1\text{ mm}$
- Vertical compensation $\pm 1^\circ$ (compensates for unevenness of up to 10 mm)

RK SyncFlex H

Horizontal alignment

- To prevent locked-up stress in mechanically overdefined bearing systems (more than one fixed bearing) around the horizontal axis. With RK SyncFlex H defined loose bearings supplement the application.

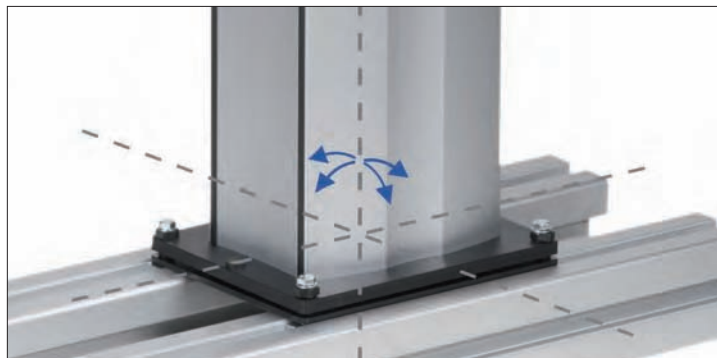


	RK SyncFlex H
Loads	1000N, 1500N, 3000N
Height compensation	$\pm 1\text{mm}$
Installation height	36mm

RK SyncFlex V

Vertical alignment

- If the lifting columns are not parallel, the distance between the two upper fixing points will change during the movement. However, a rigid connection keeps this distance constant, and this means that the lifting columns are subject to very strong forces. RK SyncFlex V enables the compensation of unevenness in the mounting environment.



	RK SyncFlex V
Height compensation	$\pm 1^\circ$
Installation height without pressure plate	10-15 mm
Installation height with pressure plate	15-20 mm

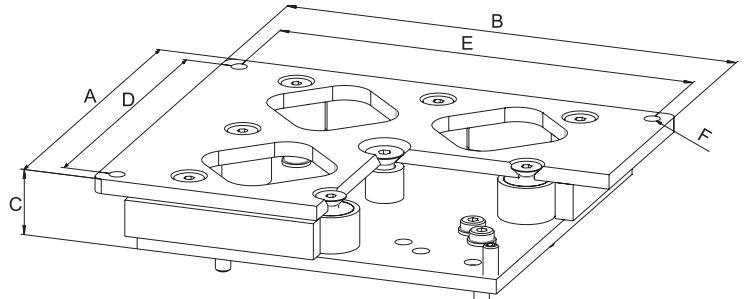
RK SyncFlex – dimensions / order data

RK SyncFlex H

- The horizontal compensation in the Z-axis enables the freedom of movement required when moving the lifting columns.

Scope of delivery:

Adjuster plate, incl. fixing material



[mm]

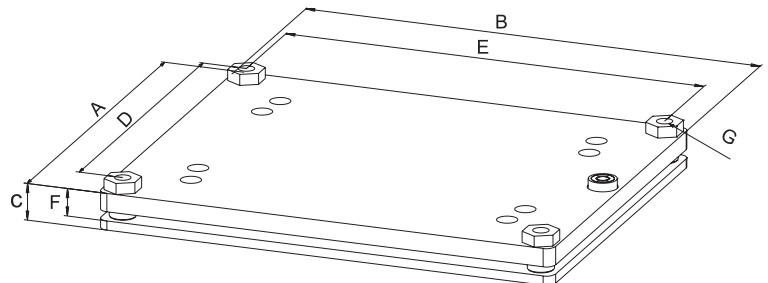
Code No.	Type	A	B	C	D	E	F
QZD140470	Alpha Colonne II large	195	245	36	225	175	M 10
QZD140469	Alpha Colonne II medium	155	195	36	175	135	M 10
QZD020471	MultiLift	70	280	36	40	260	M 10
QZD100453	Powerlift M / telescope	200	250	36	230	180	M 10
QZD100455	Powerlift S / Z	200	250	36	230	180	M 10

RK SyncFlex V

- The lifting columns can be aligned via the vertical adjustment around the X-Y axes.

Scope of delivery:

Adjuster plate, incl. fixing material



[mm]

Option:

Optionally available with or without pressure plate (see table)

Code No.	Type	A	B	C	D	E	F	G
Without pressure plate								
QZD140467	Alpha Colonne II large	195	245	-	175	225	10-15	M 10
QZD140468	Alpha Colonne II medium	155	195	-	135	175	10-15	M 10
QZD020472	MultiLift	110	300	-	90	280	10-15	M 10
QZD100446	Powerlift M	200	250	-	180	230	10-15	M 10
QZD100447	Powerlift telescope	200	250	-	180	230	10-15	M 10
QZD100449	Powerlift Z-classic	200	250	-	180	230	10-15	M 10
QZD100450	Powerlift Z-wave	200	250	-	180	230	10-15	M 10
With pressure plate								
QZD140461	Alpha Colonne II large	195	245	15-20	175	225	10-15	M 10
QZD140460	Alpha Colonne II medium	155	195	15-20	135	175	10-15	M 10
QZD020462	MultiLift	110	300	15-20	90	280	10-15	M 10
QZD100463	Powerlift M	200	250	15-20	180	230	10-15	M 10
QZD100464	Powerlift telescope	200	250	15-20	180	230	10-15	M 10
QZD100465	Powerlift Z-classic	200	250	15-20	180	230	10-15	M 10
QZD100466	Powerlift Z-wave	200	250	15-20	180	230	10-15	M 10

RK SyncFlex A - Axial adjustment for electric cylinders – LZ 60 / 70



Leveling eye

- ✓ Eliminates distortions



Axial adjustment

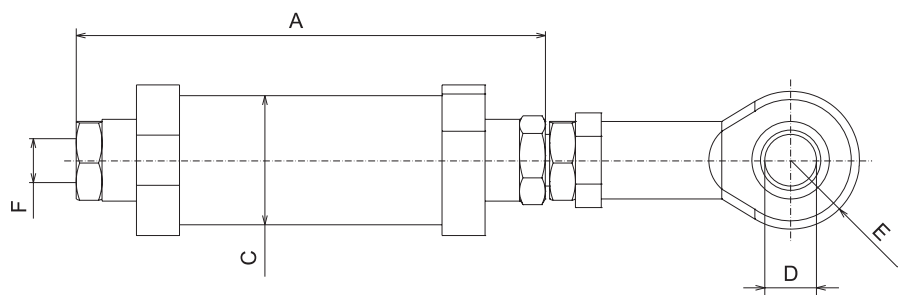
- ✓ Compensates manufacturing tolerances
- ✓ Compensates for installation conditions that are difficult to adjust
- ✓ Length compensation $\pm 2\text{mm}$
- ✓ Reduces run in time



Axial adjustment – LZ 60 / 70 Dimensions / ordering data



Scope of delivery:
Axial adjustment, incl. swivel head as depicted



[mm]

Code No.	Load	A	C	D	E	F
QZD050473	600 N	102	Ø30	Ø12	R16	M12
QZD050474	1.000 N	102				
QZD050475	2.000 N	103,5				
QZD050476	2.500 N	109				
QZD050477	3.000 N	107,5				
QZD050478	4.000 N	139,5				
QZD050494	5.000 N	137				

RK Rose+Krieger's range of services

The RK product range



LINEAR TECHNOLOGY

- ✓ Manual adjustment units
- ✓ Electric cylinders
- ✓ Lift columns
- ✓ Linear axes
- ✓ We can move loads for you of up to 3 t up to 12 m dynamically, reliably and with great precision



PROFILE TECHNOLOGY

- ✓ The tried and tested BLOCAN® aluminium assembly system
- ✓ Sections from 20 mm to 320 mm for all applications
- ✓ Joining technology with an unsurpassed combination of flexibility and reliability



JOINING TECHNOLOGY

- ✓ Fittings for the secure combining of round and square tubes
- ✓ Aluminium, steel, stainless steel and plastic elements
- ✓ Sizes from 12 mm to 80 mm



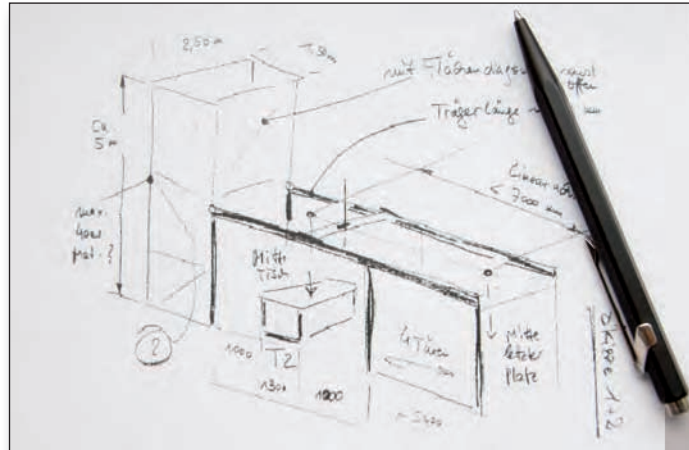
MODULE TECHNOLOGY

- ✓ Machine frames
- ✓ Workstations
- ✓ Protective clothing
- ✓ Multidimensional linear axis modules
- ✓ Complete drive solutions

What we can do for you

Do you need to focus your resources on other tasks and are you looking for a competent partner you can rely on? Working in close collaboration with you, our specialists will develop solutions tailor-made to meet your needs. If you wish, we can also assemble and commission the units on site.

- Just make a sketch of your requirements



- Our product specialists will devise a solution for you



- We can deliver your turnkey solution or assemble and commission it for you on site



R RENOWNED
KNOW-HOW


RK ROSE+KRIEGER

A Phoenix Mecano Company

**LINEAR-
PROFILE-
CONNECTING-
MODULE-
TECHNOLOGY**



FAX reply form

☒ Yes, I would like to know more about RK linear technology, please:

☐ send me the linear technology catalogue

☐ send me details of your product range in PDF format on a CD-ROM

☐ contact me

Company: _____

Contact partner: _____

Department: _____

Address: _____

Tel. + Fax: _____

E-mail: _____


RK ROSE+KRIEGER
A Phoenix Mecano Company

Connecting and positioning systems

RK Rose+Krieger GmbH
Postfach 15 64
32375 Minden, Germany
Telephone: +49 5 71 93 35-0
Fax: +49 5 71 93 35-119
E-mail: info@rk-online.de
Internet: www.rk-rose-krieger.com